



Amaris®

A M A R I S ®  
BEAUTY –  
COMPOSE IT !

**VOCO**  
THE DENTALISTS

# Amaris®

## NATURAL ELEGANCE



### Two simple steps – layers like in nature – brilliant results

#### Easy to learn

For several decades dentists have used an industry standard designed to facilitate communication of shades from a chairside perception to the technician's workbench. According to this standard, dentists first select a matching shade, apply it and polish it, and then check whether it really matches the tooth. Changes at this point would require re-doing the entire restoration.

The Amaris shade system invites to think differently: the shade impression is developed "as you go". Getting it right requires almost no experience – simply follow the instructions – and enjoy the results! Dentine shines through enamel – together they define the optical appearance of the tooth.

Amaris offers a shade system which follows this natural principle and reduces aesthetic direct restoration to two simple steps.

#### The base shades O1 to O5 and OB

The opaque base shades cover the entire shade range of dentine. The dentist selects the matching base shade with the help of a shade guide, and applies and cures this material in the first restorative step in the dentine area. The base shade is also used to create mamelons.

#### The enamel shades TN, TL and TD

In the second step, the selected base shade is either confirmed or adjusted. If the base shade already matches the tooth shade, it is confirmed using the enamel shade TN (Translucent neutral). If the base

shade appears lighter than the tooth, it can be darkened using the enamel shade TD (translucent dark). If the base shade appears too dark, it can be lightened using the enamel shade TL (Translucent light).

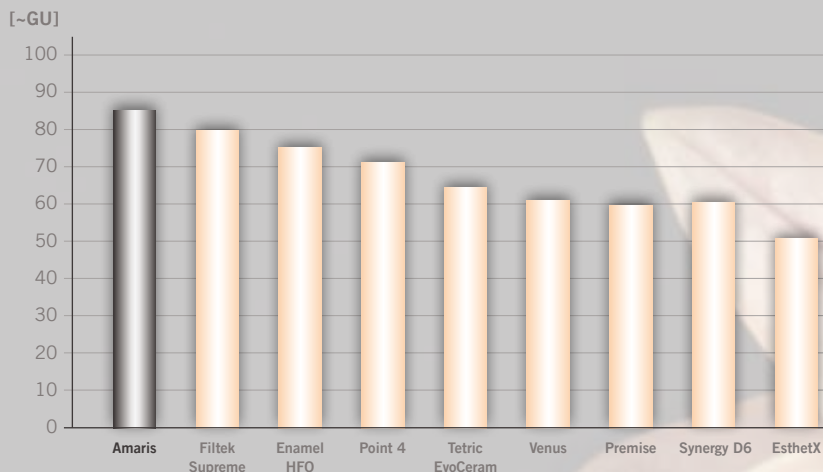
#### The special shades HT and HO

For special effects Amaris offers two flowable special shades. HT (High translucent) allows to create stunning visual depth and is ideal for very translucent incisal edges. HO (High opaque) is a flowable shade which allows to mask discolourations or to prevent the shining-through of the dark oral cavity.

#### Handling and polishing

The base and enamel shades have a non-sticky smooth consistency

### Polishing results in reflection units (RE)



Polishing results in reflection units (RE) according ISO 2873 with polisher "Easygloss"  
VOCO GmbH 2007

Filtek Supreme, Enamel HFO, Point 4, Tetric EvoCeram, Venus, Premise, Synergy D6, EsthetX are not registered trademarks of VOCO GmbH

which allows to spread out the material even to fine layers. The material follows the instrument and does not pull itself back. Amaris has an excellent polishability, and the restorations will become invisible. Natural fluorescence and high colour stability maintain this result long-term.

### Indications

- Aesthetic restoration of Class III, IV and V cavities in anteriors
- Aesthetic restoration of Class I, II and V cavities in posteriors
- Reconstruction of traumatically damaged anteriors
- Direct and indirect composite veneers, facing of discoloured anteriors
- Correction of shape and shade for improved aesthetics
- Repair of highly aesthetic ceramic restorations, e.g. veneer repair
- Splinting, interlocking of teeth

### Advantages

- Two simple steps, perfect results
- Layering like in nature: shades are created from the inside of the tooth
- Easy to learn, fast aesthetic results
- Intuitive approach, no preconceived shades
- Non-sticky consistency is ideal for modelling and shaping
- Long resistance to ambient and chair light
- Optimal polishability
- Natural fluorescence and high colour stability
- Good chameleon effect for invisible restorations

### Natural fluorescence:



Only fluorescence that is comparable to natural tooth substance yields a visual depth effect which is perceived as brilliance and vitality

BEAUTIFULLY SIMPLE

Restoration of a Class II cavity after fracture of an amalgam filling in tooth 45



1 Fractured occlusal distal amalgam filling in tooth 45



2 Placement of rubber dam and removal of remaining amalgam. Situation after complete excavation



3 Opaque dentine base layer applied in increments



4 Final layer with translucent enamel shade



5 Finished, polished restoration (vestibular view)



6 Finished restoration from occlusal view

Replacement of a composite filling (Class II cavity) in tooth 35



1 Insufficient mod composite restoration in tooth 35



2 Situation after removal of the filling and complete excavation



3 Incremental layers of opaque dentine base shade



4 Final layer with translucent enamel shade



5 Finished, polished restoration

Source:

Assistant Professor Andreas Braun, DMD  
Felix Krause, DMD

Periodontology, Conservative and Preventative Dentistry Clinic, Centre for Dental and Oral Medicine, Rheinische Friedrich-Wilhelms University of Bonn, Welschnonnen St. 17, 53111 Bonn, Germany



## CLINICAL CASE

### Restoration of a class IV cavity



1 Initial situation: incisal fracture in teeth 11 and 21



2 Conditioning the tooth substance with 37 % phosphoric acid



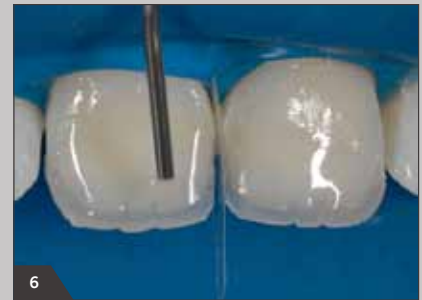
3 Application of the adhesive



4 Application of Amaris TL to reconstruct the palatal enamel portion



5 Modelling the dentine and mamelons with Amaris O1



6 Creating mamelons with a natural appearance through light pigmentation with Amaris Flow HO



7 Forming the incisal edges with the highly translucent Amaris Flow HT



8 High gloss polish of the restoration



9 Completed anterior restoration



10 Natural opalescence and translucency of the restorations



11 Fluorescence like with natural teeth



12 Anterior restorations indistinguishable from the natural teeth



**Presentation**

- REF 1930 **Amaris® Set**  
set 8 × 4 g syringe (O1, O2, O3, O4, O5, TL, TN, TD), 2 × 1.8 g syringe  
Amaris Flow (HT, HO), accessories
- REF 1931 **Amaris® Set SingleDose**  
8 × 4 g syringe (O1, O2, O3, O4, O5, TL, TN, TD), 2 × 1.8 g syringe  
Amaris Flow (HT, HO) + 50 Futurabond NR *SingleDose*, accessories
- REF 1949 **Amaris® Caps Intro Set**  
4 × 0.25 g Caps (each O1, O2, O3, O4, O5, TL, TN, TD), 2 × 1.8 g syringe  
Amaris Flow (HT, HO), accessories
- REF 1950 **Amaris® Caps Set**  
16 × 0.25 g Caps (each O1, O2, O3, O4, O5, TL, TN, TD), 2 × 1.8 g syringe  
Amaris Flow (HT, HO), accessories
- REF 1951 **Amaris® Caps Set SingleDose**  
16 × 0.25 g Caps (each O1, O2, O3, O4, O5, TL, TN, TD), 2 × 1.8 g syringe  
Amaris Flow (HT, HO) + 50 Futurabond NR *SingleDose*, accessories
- Amaris Gingiva**
- REF 1970 **Amaris® Gingiva Set**  
set 1 × 4 syringe base shade nature, 3 × 1.2 g syringe  
opaquers (white, light, dark), accessories
- REF 1971 **Syringe**  
1 × 4 syringe base shade nature

**One 4 g syringe in the following shades:**

- Base shades (opaque)**
- REF 1933 Amaris Opaque, O1  
REF 1934 Amaris Opaque, O2  
REF 1935 Amaris Opaque, O3  
REF 1936 Amaris Opaque, O4  
REF 1937 Amaris Opaque, O5  
REF 1938 Amaris O Bleach, OB

- Enamel shades (translucent)**
- REF 1940 Amaris Translucent light, TL  
REF 1941 Amaris Translucent neutral, TN  
REF 1942 Amaris Translucent dark, TD

**16 × 0.25 g Caps in the following shades:**

- Base shades (opaque)**
- REF 1953 Amaris Opaque, O1  
REF 1954 Amaris Opaque, O2  
REF 1955 Amaris Opaque, O3  
REF 1956 Amaris Opaque, O4  
REF 1957 Amaris Opaque, O5  
REF 1958 Amaris O Bleach, OB

- Enamel shades (translucent)**
- REF 1960 Amaris Translucent light, TL  
REF 1961 Amaris Translucent neutral, TN  
REF 1962 Amaris Translucent dark, TD

**2 × 1.8 g syringe in the following shades:**

- Special shades**
- REF 1945 Amaris Flow, High translucent, HT  
REF 1946 Amaris Flow, High opaque, HO

VOCO GmbH  
Anton-Flettner-Straße 1-3  
27472 Cuxhaven  
Germany  
  
Tel.: +49 (0) 4721-719-0  
Fax: +49 (0) 4721-719-140  
  
info@voco.com  
www.voco.com

Available from:

